

The Perfect Wairarapa Wedding

Congratulations!

If you're reading this, chances are you've just said 'yes' and are already planning your big day.

Your wedding is a very special occasion and we at Copthorne Hotel & Resort Solway Park can ensure you enjoy a stress-free and happy day in our beautiful surroundings.

So, relax ...

Let us take care of your wedding arrangements allowing you to sit back and soak up memories that will last a lifetime.

We would be excited to be a part of your big day and would be happy to discuss all your ideas and requirements, tailoring your magical day to create a uniquely special experience for you and your friends and family.

We have a superb team who will be dedicated to making your wedding day unfold seamlessly and we look forward to hearing from you soon.

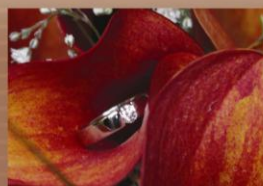
Warm Regards

Wendy Donnelly
Functions Coordinator



**COPTHORNE
HOTEL & RESORT**

SOLWAY PARK, WAIRARAPA



Call 0800 SOLWAY | functions@solway.co.nz | www.solway.co.nz

Immerse yourself in unique rural charm and country hospitality ...

There's nothing like a Wairarapa wedding. Luxurious landscapes, huge skies, beautiful light and ambience to die for accentuate the beauty of this region renowned for its premium vineyards, olive groves, wild coastlines and many cafes, restaurants, boutiques and antique shops.

There is also no better place from which to experience it from than the Copthorne Hotel & Resort Solway Park which is accessible in comfort and with ease from both Wellington and Auckland by road, rail and air.

Based in Masterton and boasting magnificent views of the Tararua Ranges, the Copthorne Hotel & Resort Solway Park is set in 10 hectares of landscaped grounds and gardens. Put simply; it offers the ultimate wedding headquarters due to the extensive range of on-site facilities and accommodation catering for bride, groom and guests; and of course, dedicated professionals to take care of every aspect of your big day.

Ceremonies

No matter what the weather, we offer the perfect setting for weddings of all seasons.

Within 24 acres of landscaped parklands and native bush, the rose garden sets a romantic setting for you to exchange your vows. Walk through the archway and into a fragrant rose garden of whites and yellows and down a box-hedged isle to our garden gazebo, where your ceremony awaits.

If the weather is unkind, then the naturally lit, timber ceilings of our function spaces can be decorated with archway, registry table and music for an intimate service by the open fire.

Photos

Capture the spirit of your day, your family and friends in the beautiful natural settings of the resort grounds, rose gardens and native bushwalks.

Receptions

From small and intimate weddings to groups of up to 500, you make our flexible function spaces your own – and we can take care of everything for you, leaving you to mix, mingle and dance the night away with your guests.

Catering

In a region where great food and wine are rated as necessities rather than luxuries, 'The Grill at Solway Park' does not disappoint. We spoil you for choice with catering options featuring fresh local produce – from relaxed finger food, to formal seated feasts.

We can provide:

- Canapés
- Buffet Dinners
- Set Menus
- Sharing Platters
- Barbeques
- A la carte menus

Contact us for sample menus and prices – we can create individualised menus to suit the feel of your wedding day.

Liquor

We can provide liquor packages, bar tabs, cash bars or can discuss our BYO options with you.

Wedding Co-Ordination

You can place your confidence in us, knowing that your special day will run smoothly and stress free. On the day the team at Copthorne Hotel & resort Solway Park will work together to provide a blend of thoughtful service and superb attention to detail.

Our wedding consultant is available to you at no extra cost to help create your vision for a memorable day. This includes an initial meeting to show you the resort and provide contacts for florists, musicians, entertainment, hair & make-up artists, photographers, celebrants, cake designers, car hire, horse & carriage, transport, babysitters and guest activities.

Venue Hire – What's included?

We tailor weddings to suit all budgets. We offer a full hire package which includes:

- Full use of all facilities on the 10 acre resort grounds, including: flexible function rooms, spa pools, golf driving range, tennis & squash courts, indoor & outdoor swimming pools, beach volleyball, petanque pitch & gymnasium.
- First night accommodation for the newly weds in an Executive Suite including Breakfast.
- Full use of our grounds & gardens for an outdoor wedding ceremony & photos
- Wedding Consultant
- White linen and table ware, (crockery, glassware & cutlery)
- Cake table, stand & use of Cake Knife
- Registry table & Chairs
- Gift Table
- Free Car Parking for your guests
- Reception Room table arrangement and set up
- Data Projector & stereo system – including microphone, ipod/mp3 connection
- Dance floor
- Food and beverage staffing for the day.

Accommodation – luxury, comfort & style

All our bridal couples enjoy complimentary accommodation on their wedding night, followed by breakfast in The Grill at Solway Park the following morning.

As a Four Star Plus hotel & resort, we offer affordable luxury accommodation packages for wedding guests, as well as honeymoons and romantic pre-wedding breaks.

For your wedding guests we offer a special Function Bed and Breakfast package. We recommend you reserve your guest rooms 6 weeks to a month in advance and encourage them to then make their individual bookings direct.

All our newly refurbished rooms feature natural high country décor and fresh landscape art and photography by local Wairarapa artists. They offer the complete package in comfort and stylish design and are appointed with free car parking, patios, multi-channel SKY TV, direct dial telephone, mini-bar, tea and coffee making facilities, iron and ironing board and hairdryer.

Please see over for all our room types.

Room Types

A variety of accommodation options are available to suit most requirements



63x Standard Rooms

These newly refurbished rooms provide two queen beds. Each room comes conveniently located with a car park or garden view. Facilities include: en-suite bathroom with power shower over bath, air-conditioning, Wireless Broadband internet facilities, flat-screen TV with Sky TV, mini-bar, tea and coffee making facilities and an iron and ironing board.



23x Superior Rooms

Elegantly furnished studio rooms with a luxurious King bed. Each room features a tiled patio with outdoor furniture and they are conveniently located with a car park or garden view. Facilities include: en-suite bathroom with power shower, separate bath and under-floor heating, robes and slippers, air-conditioning, Wireless Broadband internet facilities, 26" flat-screen TV with Sky TV and DVD player, mini-bar, tea and coffee making facilities and an iron and ironing board.



5x Junior Suites

Each spacious suite has two separate bedrooms containing a King bed in one and two single beds in the other. Beds can be made into two kings or four singles. Each Junior Suite comes conveniently located with a car park and garden courtyard with outdoor furniture. Facilities include: en-suite bathroom with power shower and under-floor heating, separate toilet, robes and slippers, air-conditioning, Wireless Broadband internet facilities, two 26" flat-screen TVs with Sky TV, DVD player, mini-bar, tea and coffee making facilities and an iron and ironing board.



8x Apartments

Each spacious Apartment provides a separate bedroom with a queen bed. Two singles beds are also provided in the kitchen dining area. Each Apartment contains its own kitchenette including hob, microwave, dish draw dishwasher, dining ware and utensils. Each room comes conveniently located with a car park or garden view. Facilities include: en-suite bathroom with shower and toilet, ceiling fan, TV with Sky TV channels in each room, Wireless Broadband internet facilities, Mini-bar, tea and coffee making facilities and iron and ironing board.



3x Executive Suites

Each Executive Suite offers a separate lounge and dining area and the adjoining spacious bedroom has a luxurious King bed. Each Suite features a tiled patio with outdoor furniture and they are conveniently located with a car park or garden view. Facilities include: en-suite bathroom with power shower, separate spa bath and under-floor heating, robes and slippers, air-conditioning, Wireless Broadband internet facilities, two 26" flat-screen TVs with Sky TV, DVD player, mini-bar, tea and coffee making facilities and an iron and ironing board.





COPHTHORNE HOTEL & RESORT

SOLWAY PARK, WAIRARAPA

High Street, PO Box 453, Masterton 5840
reservations@solway.co.nz
www.solway.co.nz 0800 SOLWAY

